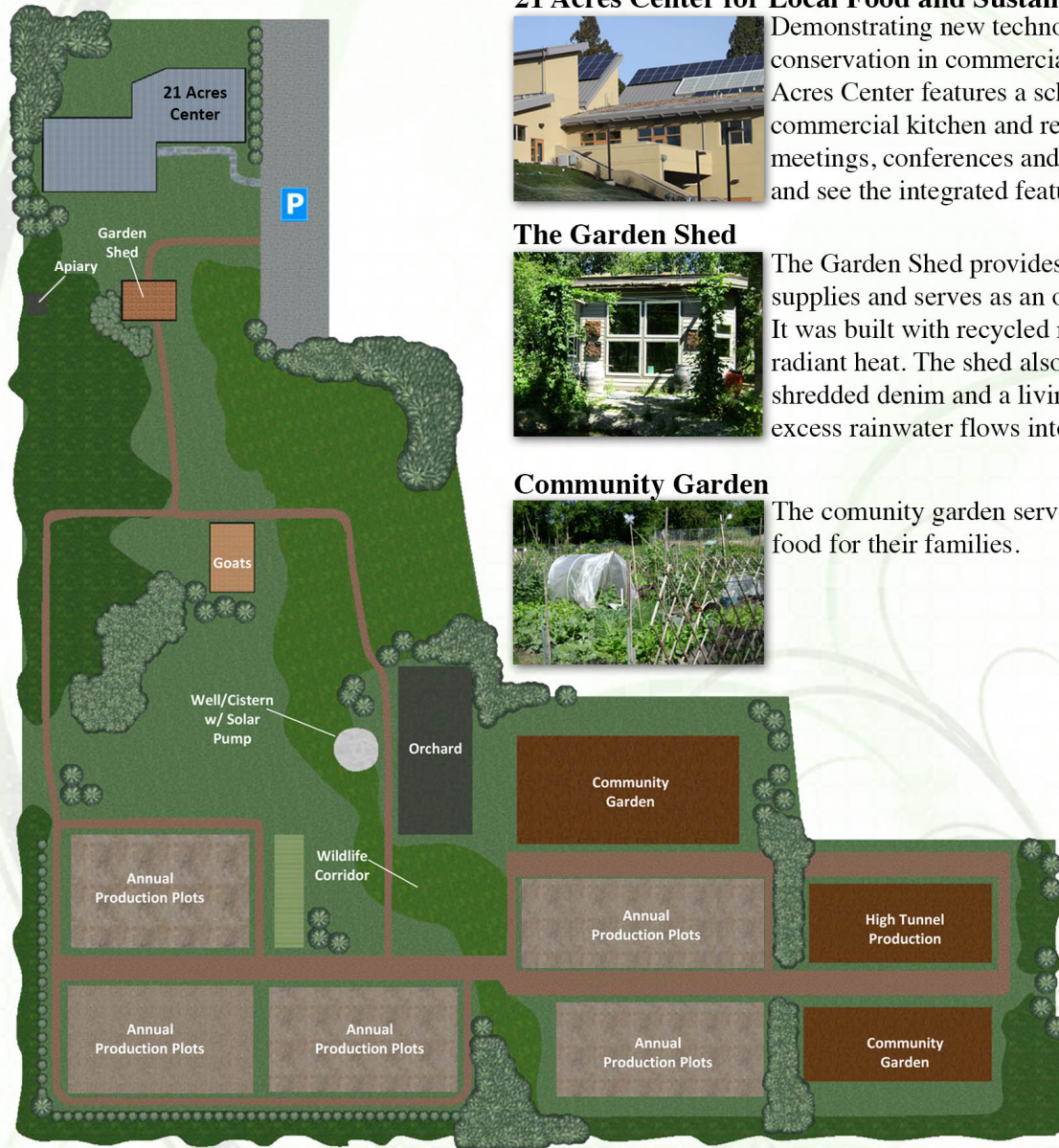


## NE 171st Street



21 Acres mission is to cultivate, demonstrate, and advance systems that support sustainable agriculture. 21 Acres is a vision to create and operate a vital space to rediscover the agricultural heritage of our region and learn about cutting edge design and technologies as well as ways to maximize the beneficial aspects of fresh local produce and farm products.

### 21 Acres Center for Local Food and Sustainable Living



Demonstrating new technologies for energy and water conservation in commercial and residential buildings, 21 Acres Center features a school, farm market, food hub, commercial kitchen and rental space for public and private meetings, conferences and events. Visit during public hours and see the integrated features in use.

### The Garden Shed



The Garden Shed provides a storage area for equipment and supplies and serves as an office space for the farm manager. It was built with recycled materials and features geothermal radiant heat. The shed also has insulation made with shredded denim and a living roof which reduces runoff; excess rainwater flows into an adjacent pond.

### Community Garden



The community garden serves as spaces for people to grow food for their families.

### Sustainable Farming



All produce, sustainably w

### Livestock



Bees are hous the wildlife c pollination fo neighboring f to keep down blackberries a source of natu

### Orchard



The orchard s perennial fruit include diver maturities.

### Wildlife Corridor



The existing corridor that j including deer mammals.





## **The 21 Acres Center for Local Food and Sustainable Living**

is a nonprofit agricultural and environmental learning center showcasing the agricultural heritage of our region. The Center features sustainable design and technologies as well as ways to maximize the beneficial aspects of fresh local produce and farm products. Supporting the farm and school, 21 Acres features a retail market, commercial kitchen and special event rental space, all housed on the property and within the newly constructed green-built building.

- **School:** Courses and classes focused on growing, eating and living sustainably
- **Farm:** Certified organic and transitional acreage producing food for the marketplace
- **Kitchen:** Commercial kitchen for value-added production
- **Market:** Selling certified organic and pesticide-free local farm products
- **Membership:** Support to help people lead sustainable lives
- **Special Events:** Memorable location for programs, meetings and celebrations
- **Green Building:** Leading edge sustainable design with advanced monitoring systems
- **Food Hub:** Aggregation and distribution center for local farm product to institutional buyers, low-income childcare centers, senior congregate meal sites, restaurants and caterers

### **Contact Information**

Phone: (425) 481-1500

Address: 13701 NE 171st Street, Woodinville, WA 98072

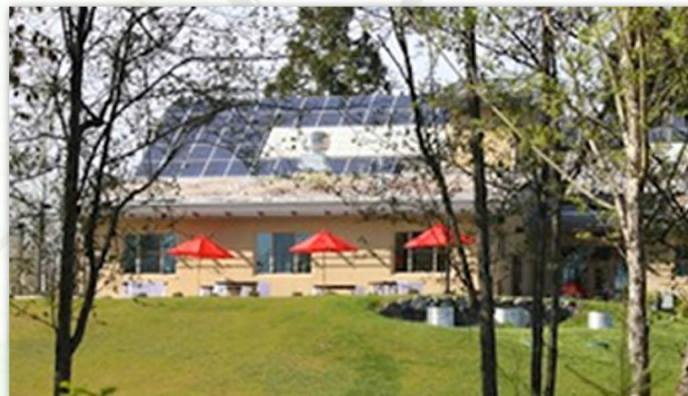
[21acres.org](http://21acres.org)

[generalinfo@21acres.org](mailto:generalinfo@21acres.org)

## **Building and System Technologies**

Consistent with our mission for a sustainable future, the 21 Acres Center is an innovative building designed to Leadership in Energy And Environmental Design (LEED) standards. The building and its integrated systems provide lessons for the community to consider in lessening their own impact on the planet.

- Thermal Mass: insulating concrete forms; earthen berm
- Ground Source Heat Pump System; radiant floors
- Lighting: skylights, daylight windows and energy efficient fixtures
- Natural Ventilation
- Solar Thermal System: 25.6kW rooftop photovoltaic (PV) solar panel array
- C.E.S. Smart Distribution Panels measure energy consumption
- Composting Toilets and low flow fixtures
- Living Roof and stormwater system: pervious pavers, bio-swales, rain gardens
- Septic/Bio-Filter System: greywater management
- Geopier Foundation System
- Local and recycled content for building materials and finishes
- EV Charging Stations



## **Fun Farm Facts**



Yes Ind  
Acres!



All 21 a  
\$350,00  
part of a  
create an  
District,



We do h  
livestock  
through  
potentia  
vegetati



Manure  
grass cli  
used to i  
improve

21 acres  
most fer  
soils, lo

Due to t  
Woodin  
21 Acre  
urban/ru

